

Community Sector Taskforce



**National Forum 2005**

# Contents

<b>CONTENTS</b> .....	<b>2</b>
<b>CONTACT DETAILS</b> .....	<b>3</b>
<b>CALL TO ACTION!</b> .....	<b>4</b>
<b>THE PLAN</b> .....	<b>5</b>
<b>FROM THE CO-CHAIRS</b> .....	<b>7</b>
<b>THANK YOU!</b> .....	<b>8</b>
<b>YOUR TASKFORCE MEMBERS</b> .....	<b>9</b>
<b>NATIONAL FORUM PROGRAMME</b> .....	<b>14</b>
<b>NATIONAL FORUM PROGRAMME CONT ...</b> .....	<b>16</b>
<b>SETTING THE SCENE</b> .....	<b>18</b>
<b>STRENGTHENING THE SECTOR</b> .....	<b>23</b>
<b>STRENGTHENING RELATIONSHIPS WITH GOVERNMENT</b> .....	<b>28</b>
<b>FINANCES</b> .....	<b>37</b>
<b>TANGATA WHENUA DECLARATION</b> .....	<b>38</b>
<b>TANGATA TIRITI DECLARATION</b> .....	<b>39</b>
<b>APPENDIX I</b> .....	<b>41</b>
<b>APPENDIX II</b> .....	<b>46</b>

## Contact Details

For further information, please contact:

Iris Pahau  
National Development Manager  
Community Sector Taskforce

Phone +64-4-526-2036  
Mobile +64-21-177-1012  
Email [awe@paradise.net.nz](mailto:awe@paradise.net.nz)  
or  
[communitysectortaskforce@paradise.net.nz](mailto:communitysectortaskforce@paradise.net.nz)

## Call to Action!

The call to organise a National Forum for the Tangata Whenua, Community & Voluntary Sector was mooted at the National Strategic Leader's Hui held in Wellington on May 2005.

The Taskforce had experienced difficulty with the direction early in 2005 having received a directive from Government to focus on creating a legal structure. However in March, the Minister for the Community & Voluntary Sector stated that Cabinet was not in support of the Taskforce's direction and it was not convinced that the Taskforce had the mandate of the Tangata Whenua, Community & Voluntary Sector to continue with the work government was funding. The Taskforce then called a National Strategic Leader's Hui to reconfirm the mandate to continue to do the work that it was currently undertaking. The outcome of National Strategic Leader's Hui was:

- Let's express our tino rangatiratanga, claim our position and move forward – keep going, stay together and be true to the kaupapa;
- Getting things done and having a two house view of the process for doing it brings together the strengths of both houses;
- We need to consider whether we should change the name of the CST, establish a Trust to give structure to our work as part of our reconnecting with the Sector prior to a National Forum in late 2005;
- We need to consider the two-house model in all we do from this point onwards with the Taskforce advocating strongly on behalf of both houses;
- We need to undertake development projects including implementation support for the two-house model within the Taskforce and diverse organisations in the Sector, research, media, charities, IRD and engaging with Local Government;
- Identify and implement practical uses of the two house model in our future work programme at all levels of the Sector and in our communities.

The Taskforce negotiated with Government to partially fund a National Forum in November 2005 to seek direction for the Sector.

The Taskforce then set about planning to host the National Forum.

## The Plan

The Taskforce called a sub-committee together to draft a plan and itinerary for the National Forum. The committee consisted of Peter Glensor, Co-Chair Community Sector Taskforce, Andrea Goble, General Manager, Funding Information Service, Anna Leydon, appointed as National Forum Co-ordinator and Iris Pahau, National Development Manager.

## The Theme

The theme for the National Forum was set at the Taskforce's August Hui:

**Walking together, working together**  
**Me hikoi kotahi tatou**

## The Tikanga/Protocol

The Taskforce decided that the forum should be interactive and should follow the operational protocols that the Taskforce worked in including caucusing within Tangata Tiriti and Tangata Whenua groupings. Caucusing would also be extended to include regions to allow participants to establish regional networks for ongoing regional development.

## Attendees

Full participation from the sub-sectors, the regions, ethnicity, nationals and umbrellas was critical to ensure that we had a good cross section of the Sector attending. A 'wish list' of prospective attendees was drawn up as a target to reach:

<b>TANGATA TIRITI</b>			
<b>Sub-Sector/Regions</b>	<b>Target No.</b>	<b>Sub-Sector /Regions</b>	<b>Target No.</b>
Arts Culture and Heritage	2	Ethnic Communities	10
Education and Employment	2	Pacific communities	10
Environment and Conservation	2	Women	2
Faith Communities	2	Youth	2
Health	2	Older Persons	2
International Development	2	Disabilities	2
Law, Advocacy and Human Rights	2	National Umbrellas	20
Philanthropy	2	West Coast	2
Professional Associations	2	Otago	2
Social Services and Housing	2	Southland	2
Sport and Recreation	2	Wellington	2
Northland	2	Canterbury	2
North Shore	2	Gisborne and East Coast	2
Waitakere	2	Taranaki	2
Auckland City	2	Hawkes Bay	2
South Auckland	2	Wanganui	2
Waikato	2	Manawatu	2
Wairarapa (incl. Tararua, Masterton, Carterton)	2	South Canterbury (incl. Timaru, Ashburton, Mackenzie, Waimate )	2
Northern South Island (incl. Tasman, Nelson, Marlborough)	2	Bay of Plenty	2
<b>Total</b>	<b>38</b>	<b>Total</b>	<b>72</b>

<b>TANGATA WHENUA</b>			
Te Tai Tokerau/Tamaki Makaurau	20	Te Tai Tonga	20
Tainui/Waiariki	20	Te Tai Hauauru	20
Ikaroa-Rawhiti	20	National Organisations	10
<b>Total</b>	<b>60</b>	<b>Total</b>	<b>50</b>
<b>GRAND TOTAL</b>			<b>220</b>

## **Expressions of Interest**

To gauge the level of interest it was decided to invite Expressions of Interest from prospective attendees. This resulted in 108 responses.

## **Gap Analysis**

Following the closing date of the Expression of Interest, a Gap Analysis was completed to determine where the shortfall was in relation to sub-sector, regions, ethnicity, nationals and umbrellas. A concerted effort to recruit the shortfall was then activated by the Taskforce. This resulted in attendance of 145 formally registered (See Appendix I) and 160 eventual attendees and 51 formal apologies received (see Appendix II).

## **Registrations**

Registrations forms were distributed via the Taskforce and a nominal registration fee (\$50) was requested to ensure commitment to attend and to assist in a forecasted budget shortfall. Typically registrations were still being confirmed and received up to a day prior to the commencement of the National Forum.

Workshop topics were finalised at the September meeting of the Taskforce and invitations were extended to prospective Facilitators with a resounding response. The registration forms requested attendees to nominate which Workshop they would like to participate in and provided a very brief description of what the workshops would cover.

## From the Co-Chairs

On 11 and 12 November 2005, the 160 representatives of the Tangata Whenua, Community and Voluntary Sector met in Wellington to consider national strategic issues that face the Sector. The forum achieved our primary aims:

- bringing together people from the diversity of the Sector
- sharing of information, skills and ideas
- spelling out the priority issues and programmes for sector-wide work
- mandating a way ahead for our combined work.

We reflected on the words of Potatau Te Wherowhero, the first Maori king who spoke the following words two centuries ago:

Kotahi te kowhau o te ngira  
E kuhuna ai te miro ma  
Te miro whero, te miro pango.  
I muri i a au  
Kia mau ki te aroha  
Kia mau ki te ture  
Kia mau ki te whakapono

There is but one eye of the needle  
Through which the white,  
the red and the black threads  
must pass.  
After I have gone hold fast to love,  
to the law and to  
all we believe in.

For the Community Sector Taskforce, the bringing together of the various peoples of the Sector is possible under our way of working together within a Tiriti/Treaty relationships framework. 1/3 of the 160 participants were Tangata Whenua, and 2/3 from a wide range of backgrounds – collectively working as Tangata Tiriti. Through extensive caucusing as Tangata Whenua and Tangata Tiriti, and coming together in the Meeting Place, the Forum worked on practical development programmes including a new research centre for our Sector, better information and communications networks, strategies to work more effectively with local government, capacity building and voicing the view of the Sector on issues like the Charities Commission processes, taxation issues and promoting volunteering.

There was a strong call for strengthened networks at the regional and local level, with some specific commitments to start working as a Sector at all these levels.

We welcomed the new Minister, Hon. Lulumanuvao Winnie Laban, and had a constructive dialogue.

The Community Sector Taskforce was charged by the Forum with an ongoing programme of work at the national, regional and local levels. We confirmed the need for an ongoing national leadership group resourced to do the work, the importance of regular meetings of national umbrellas and Sector leaders, a two yearly national Sector Forum as well as regional and local forums.

Our task now is to develop a work programme so that our aim to continue to build a Sector which is sustainable, connected, informed and able to do its work for the benefit of communities takes another important step forward.

Tony Spelman  
Taskforce Co-Chair

Peter Glensor  
Taskforce Co-Chair

# Thank You!

The Taskforce would like to extend a huge thank you to the following for their support and contribution to the success of our National Forum:

## **Kaumatua/Kuia/Whaea**

Georgina Barrett  
Milly Hawiki  
Hemi Kara  
Kura Moeahu  
Iris Pahau  
Wereta Pahau  
Gary Reid  
Noelene Smiler

## **Funders/Donations**

Funding Information Service  
Office of Community & Voluntary Sector

## **Facilitators**

Weng Kei Chen  
Pania Coote  
Naj Dehlavi  
Peter Glensor  
Dr Gill Greer  
Anna Kominik  
Maree Wilson  
Carole Maraku  
Barbara McLennan  
Atareta Poananga  
Sandy Pokaia  
Tina Reid  
Jo-Ani Robinson  
Sharon Torstonson  
Chris Wikaira  
Tu Williams

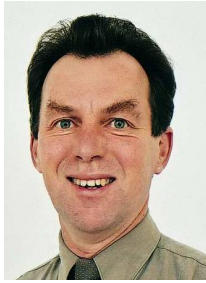
## **Organisers/Assistants**

Anna Leydon  
Kena Duigan  
Madeline Leydon

## **Venue**

Management and Staff of Brentwood Hotel

## Your Taskforce Members



### Peter Glensor

Peter is Co-Chair of the Taskforce, and has served on the Taskforce since it began in 2002. He is a Board member of the NZ Drug Foundation, and the Community Trust of Wellington, and is Chair of a Church social service agency – Wesley Community Action. He is a member of the Advisory Committee for the Study of the New Zealand Non-Profit Sector, the Editorial Board of the Australian Journal of Primary Health and the New Prescribers Advisory Committee.

For over 30 years Peter has been working to enhance the capacity of local communities to engage in setting priorities and policies for their society. From 1997 to 2005 he was on the national committee for ANGOA – the Association of NGO of Aotearoa – for five years as its Chair. He spent 10 years as head of Health Care Aotearoa – focusing on the primary health needs of Maori, Pacific and low income communities. He was a founding member of the Health and Disability NGO Working Group. His background is in the Methodist Church, the ecumenical movement, international development, youth, health and community work.

Peter is an elected member and Chair of the Hutt Valley District Health Board (DHB), and a Greater Wellington Regional Councillor, representing Lower Hutt.

In Peter's political roles, he is leading initiatives to ensure strong intersectoral engagement, links with the community, and programmes addressing health inequalities.

Peter lives in Korokoro, Lower Hutt, and is married with a merged family of 6 children, and 3 grandchildren.



### Tony Spelman – Ngati Hikairo

Tony is involved in tribal management for his Iwi Ngati Hikairo in Kawhia as Secretary of Te Runanganui o Ngati Hikairo. He is also involved in a Mangere community education and employment organisation as Chair of the Board of METTCi (Mangere Education and Technical Training Incorporated).

Tony has worked on the development process that led up the May 2004 Hui in Hamilton, was a member of the Transition Team for Tangata Whenua along with Atareta Poananga. He currently serves as the Tangata Whenua Co-Chair of the Taskforce.

In the Health sector Tony is a Community Participant in the credentialing process for Counties Manukau District Health Board Clinicians.

Since 1984 Tony has worked in the field of Human Resources and Organisation Development within the Public Sector and since 1990 has worked with the Treaty of Waitangi in the life and work of Public Sector organisations, in both central and local government.

Before that Tony worked for the Manukau City Council, as Manager of Governance and Democracy looking at the question of how communities participate in the affairs of local government as well as the effective development of sustainable Tiriti/Treaty relationships with Mana/Tangata Whenua.



### **Weng-Kei Chen**

Weng-Kei is a New Zealander of Chinese descent. He came to Christchurch from Malaysia in 1969 for his tertiary education in Civil Engineering. He has worked in the Local Body sector for the last 30 years and is currently employed by the Christchurch City Council, specialising in Road Asset Management and policies on the Use of Road Space.

Weng-Kei has been actively volunteering in his community since the late 1970's. The volunteering work is within his Chinese community, schools and in the National scene. He has served as Presidents of the Canterbury Chinese Cultural Centre, Chinese Lions Club of Christchurch, Board of Trustees for 6 years, Federation of Ethnic Councils (2000-2003), Advisor to the National Plan of Action Project for Human Rights Commission and a member of the Community Task Force.



### **Hori Awa – Waikato, Tainui**

Hori is proud to be Maori of Waikato, Tainui descent. He was born, educated and continues to live in the community of Rahui Pokeka (Huntly) and committed to his whanau.

Hori has extensive experience spanning 25 years in Iwi and Community development at all levels. In Tainui Tribal Governance he has previously been Chairman of his Marae committee and an elected member to the executive of Tainui, and currently 10 years as executive on Nga Marae Toopu, (grouping of 70 Marae throughout Tainui). In the Community he was previously on a school Board of Trustees, and spent 6 years on the Waikato Conservation Board. He is currently Chairperson of Tiaki Tangata (forum for the community and government agencies), Chairperson of Trust Waikato (responsible for a \$200 million asset), and a member of the Iwi Maori Council of the Waikato District Health Board.

Hori's professional development includes financial management, an Iwi and Community consultant to government agencies and corporations, the last 15 years as CEO of Waahi Whaanui Trust, responsible for the development and implementation of health, social, educational and employment services for Maori and the wider community.

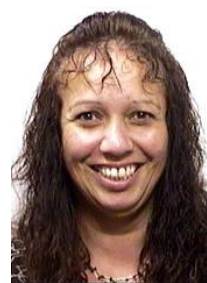


### **Bev Gatenby**

Bev is currently Chief Executive of Social Services Waikato, a charitable trust providing a range of services to strengthen community organisations in the greater Waikato. At the moment she is also privileged to be a Board member for the New Zealand Federation of Voluntary Welfare Organisations and a member of the Community Sector Taskforce. She sees these roles as providing opportunities to building the capacity of the community sector, nationally and locally. Community organisations, both tangata whenua and tangata tiriti, provide much that is wonderful in our world, and deserve to be resourced well and recognised for their vital contribution.

Bev has been involved in a range of community organisations over the years, in both unpaid and paid roles, including the National Association for Loss and Grief, both locally and nationally. Her professional experience includes eight years as a lecturer at the University of Waikato, and several years as a consultant, researcher and writer. In 2004 she completed a doctorate using action research to work with staff in Anglican Action, who were establishing a residential service for women and children. Much of her work has focused on social justice issues.

Bev lives with Chris and their three daughters on a small farm in Ohaupo in the wonderful Waikato.



### **Pania Coote – Ngai Tahu, Ngati Kauwhata**

Pania Coote has served on the Community Sector Taskforce since August 2004, and was originally part of the Working Group since 2003. She is a member of the Southland Regional Group and has been involved in social, health and sport groups locally for the past 20 years.

Pania has a degree in Social Work and is a member of the New Zealand Association of Social Workers; she has currently completed her Masters of Social Welfare and is involved in Social Policy and Community Development. Pania has nearly ten years experience as a Social Worker and has approximately eight years experience in management roles. She has established a strong network with providers across the social, health and education sectors both locally, regional and nationally.

Pania brings a balance of working from the grass roots and working at a national policy development level. She brings a diverse range of skills and knowledge through various employment opportunities. Much of her work has been enhancing the well-being of Maori and establishing relationships between government and community organizations.

Pania is born a "Bluffie" and continues to live in the community of Bluff with her husband Russell and their three children, plus one mokopuna.



### **Samuelu (Sam) Sefuiva**

Sam has an extensive background in the not-for-profit and community sector. He has experience in youth, recreation planning and community development as well as strategic planning, with a particular focus on Pasifika communities' development both nationally and internationally.

Since 1990 Sam has been a principal partner in a strategic management and training consultancy in which he has been involved in strategic communications and the start-up of new initiatives in *Pasifika* led NGO/community enterprise initiatives in Recreation, Leadership development, Older peoples, Drug & Alcohol Prevention, Education – trade/early childhood/sport/arts/tertiary – health promotion, children's advocacy, public policy, land transport safety, health and housing research.

Sam has recently retired as a director of the Pacific Business Trust and continues as a member of the Pacific Development & Conservation Trust.

Recently Sam joined the NZ Human Rights Commission as acting Manager Race and Ethnic Relations.



### **Leon Hawea – Ngai Te Whatuiapiti**

Leon's background lies in education first as a Secondary School Teacher then as a lecturer at Wellington Polytechnic which later became Massey University Wellington. He then worked with the New Zealand Qualifications Authority developing unit standards, qualifications, resources and reviewing them.

Leon returned to Hawkes Bay to take up the role as the Iwi Liaison Officer to the Hastings District Council. Through the Maori Services Network of Heretaunga he was asked to represent this group on Community Taskforce.



### **Sharon Torstonson**

Sharon lives with her husband (and sometimes one or both of their adult sons) in a small beachside community near Christchurch.

Sharon is originally from Upper Hutt and first became involved with the community and voluntary sector in Wellington, when she was a volunteer in a service for marginalised or isolated inner city residents. After a move south, she became involved; as so many parents do, with early childhood services such as kindergarten and the community crèche, and went on to serve on the Board of Trustees at her sons' school.

After completing a BA in the mid-90's Sharon was employed by the Council of Social Services in Christchurch. Her work there gave her the opportunity to develop a good relationship with Te Runaka ki Otautahi o Kai Tahu, a relationship which is ongoing and immensely rewarding. Since 2002 she has been on the Executive of the New Zealand Council of Social Services. In that year NZCOSS went through a 'near-death experience' and she was part of the team to get it back on the road to recovery. It is now strong and healthy again and its support is valued by the member networks in communities around New Zealand. The work is very much driven by the needs of the local networks, which in turn are there to support the well-being of the local communities. This focus on the local gives her a good grounding to contribute to the work of the Community Sector Taskforce.



### **Atareta Poananga – Ngati Porou, Te Whanau-A-Apanui, Ngati Kahungunu, Rangitane and Ngati Kauwhata**

Atareta has worked in the Maori community at a whanau, hapu, Iwi and national level all her life. Her passion is constitutional change from a Te Tiriti o Waitangi perspective. She is a lawyer specialising in legislative change. She is involved in local government as a councillor representing a rural ward in the Gisborne District Council. She is an elected Tairāwhiti Health Board member and Chair of Tairāwhiti REAP.

Atareta's involvement with the Community Sector Taskforce has been ongoing since 2000 with the original working party established by the Government. Atareta stated that "*this is an important kaupapa that must be progressed so that Te Tiriti is a force for unity for tangata whenua and tangata tiriti.*" Atareta is currently a Taskforce member for Tangata Whenua.

# National Forum Programme

## Strengthening the Sector

### Friday 11 November

---

9:30 a.m. Powhiri  
– Official Welcome

---

10:00 a.m. Morning Tea

---

10:30 a.m. Whakawhanaungatanga  
'Na tou rourou, na taku rourou, ka ora ai tatou'

#### **Discussion Points**

- What do you bring to the National Forum?
    - Taskforce
    - Teams
- 

12:00 p.m. Plenary Session # 1  
A New Way of Working  
– Co-Chairs: Peter Glensor & Tony Spelman

---

12:45 p.m. Lunch

---

1:30 p.m. Caucus Session # 1  
– Tangata Tiriti House  
– Tangata Whenua House

#### **Discussion Points**

- What do we want to achieve?
  - Why are we running this workshop?
  - What does this model mean for you and how can we support you to achieve it?
  - Some practical ways of look and learn and have some support to do some work on it.
  - Sharing stories on how this may work
    - Working in two worlds
    - What does this mean for your group/s
    - Real life examples
    - Vision/Successes
- 

2:30. p.m. Combined House

#### **Discussion Points**

- Themes
  - Issues
  - Discussions & tones of discussion
  - Questions
-

---

3:15 p.m. Afternoon Tea

---

3:30 p.m. Concurrent Workshops Session # 1

**COMVOICEs**

Facilitators

ComVOICEs Members plus:

Naj Dehlavi

Anna Kominik

Chris Wikaira

NZFWO

Ideas Shop

Busby Ramshaw Grice

**Capacity Building/Risk Management**

Facilitators

Sandy Pokaia

Tina Reid

Waikato Social Services

NZFWO

**Advocacy**

Facilitators

Dr Gill Greer

Carole Maraku

Health and Disability Sector NGO-MoH Forum Working Group

---

5:15 p.m. Karakia/Closure for the Day  
– Within each Workshop

---

6:00 p.m. Drinks

---

7:00 p.m. Dinner

---

# National Forum Programme cont ...

## Strengthening Relationships with Government

Saturday 12 November

---

8:45a.m. Karakia

---

9:00 a.m. Concurrent Workshops Session # 2

### **Engagement with Local Government**

Facilitators

Barbara McLennan  
Former Taskforce  
Development Manager

Atareta Poananga  
Taskforce

Sharon Torstenson  
Taskforce

### **Research by and for the Sector**

Facilitators

Peter Glensor  
Taskforce

Jo-Ani Robinson  
Kainga Oranga  
Housing & Health

Tu Williams  
Committee for the  
NZ Study of the  
Non-Profit Sector

### **Sharing & Learning**

Facilitators

Pania Coote  
Taskforce

Weng Kei Chen  
Taskforce

---

10:45 am Morning Tea

---

11:00 a.m. Plenary Session # 2  
Setting Sector Priorities  
– Co-Chairs: Peter Glensor & Tony Spelman

Caucus Session # 2  
– Tangata Tiriti House  
– Tangata Whenua House

### **Discussion Points**

- What are the most important issues facing the sector nationally where we can take collective action?
- Strategic Principles
- What role do we want the Taskforce to play in the future
- What messages have we received from the workshops and how do we want to apply them

---

11:45 a.m. Combined House

### **Discussion Point**

- What are the national priorities for the Sector
-

---

12:30 p.m.

**Welcome to Hon. Lulumanuvao Winnie Laban**

Presentation of National Priorities to the Hon. Lulumanuvao Winnie Laban

- Co-Chairs: Peter Glensior & Tony Spelman
  - Address by Hon. Lulumanuvao Winnie Laban
- 

1:00 p.m.

Lunch

---

1:45 p.m.

Caucus Session # 3

- Regional Caucus

Discussion Points

- o How can we progress the National priorities regionally
  - o Where to from here regionally
- 

2:30 p.m.

Regional Feedback

**Discussion Points**

- o What do we take from the National Forum?
  - o Next Steps Forward
  - o Evaluation
- 

3:00 p.m.

Poroporoaki & Karakia/Closure for the Forum

---

# Setting the Scene

## Powhiri/Welcome

The National Forum commenced with a Powhiri recognising the role of Tangata Whenua as hosts. Elders from Whanganui A Tara and Te Awakairangi welcomed Manuhiri and offered Karakia to the success of the National Forum.

The representatives from the attendees of Tangata Whenua and Tangata Pasifika responded thanking the Tangata Whenua and organisers and extended Karakia, korero, moteatea and waiata to the National Forum attendees and participants.

## Whakawhanaungatanga

**'Na tou rourou, na taku rourou, ka ora ai tatou'**

### Facilitators

Peter Glensor – Co-Chair, Community Sector Taskforce  
Tony Spelman – Co-Chair Community Sector Taskforce

### Process

Each attendee was allocated a name tag with a specific colour when they registered at the 'front desk'. The colours represented a team/region. Attendees were requested to caucus in each of their teams/regions, introduce themselves and discuss the following, and report back to the Forum:

- What do you bring to the National Forum?

### Evaluation

I found this a useful way to make connections with others in the Forum.

*(1 = strongly disagree, 2 = disagree, 3 = neutral, 4 = agree, 5 = strongly agree)*

1	2	3	4	5	Total
1	1	6	16	20	44

### Comments

- Effective networking opportunity
- Excellent opportunity to whakawhanaungatanga
- Group was too large
- Insufficient time to share
- Miscellaneous:
  - Good use of small time allocated
  - Not enough physical arrangements
  - Too long
  - Unable to attend
  - Unable to understand korero during speeches so no connections possible

## Plenary Session # 1

### Facilitators

Peter Glensor – Co-Chair, Community Sector Taskforce  
Tony Spelman – Co-Chair Community Sector Taskforce

## Process

This session was led by the Co-Chairs of the Community Sector Taskforce, Peter Glensor and Tony Spelman. The presentation concentrated on a document that was distributed to all Forum attendees entitled "A New Way of Working":

### A New Way of Working

Sustainable, informed, connected and able to do its work for the benefit of communities

*"Na tou rourou, na taku rourou, ka ora ai tatou"*

Community Sector Taskforce

### Our Declaration

<b>TANGATA WHENUA</b>	<b>TANGATA TIRITI</b>
Identity	Independence
Te Ao Maori	Values
Diverse people	Diversity
Tikanga	Voluntary
Accountability	Advocacy
Advocacy	Accountable
Responsible	Community well-being
Consensus	Worldwide

MEETING PLACE

Community Sector Taskforce

### Key Messages

- ❑ The Tangata Whenua, Community and Voluntary Sector defines itself
- ❑ Our work in the Sector is about strengthening a Movement not about being an Entity
- ❑ We work within a Tiriti/Treaty Relationship Framework

Community Sector Taskforce

### Our Purpose/Kaupapa

- ❑ A Tiriti/Treaty relationship framework
- ❑ Sector wide inclusiveness
- ❑ Sustainable outcomes
- ❑ Work with, not for, the sector
- ❑ Regionally driven projects supported by national organisations building on strengths
- ❑ Utilise collaborative and organic processes
- ❑ Build on, not duplicate, existing services, processes, structures, organisations

Community Sector Taskforce

### Relationships Framework

Community Sector Taskforce

### Way of Working Together

Community Sector Taskforce

### Our Future Work/Mahi

- ❑ Sector leadership & strategic direction setting
- ❑ Develop regional networks, national and international links
- ❑ Advocate in order to change Government policy
- ❑ Facilitate information sharing
- ❑ Support sector wide capacity building
- ❑ Promote a respected and valued sector

Community Sector Taskforce

### Functions and Focus

ACTIVITY	NATIONAL LEVEL	REGIONAL LEVEL	LOCAL LEVEL
Setting the Strategic Direction	<ul style="list-style-type: none"> <li>• National forums</li> <li>• Planning</li> <li>• National Standing</li> <li>• Meeting of Reg</li> <li>• Support of the Tiriti/Treaty relationship and accountability</li> </ul>	<ul style="list-style-type: none"> <li>• Regional alignment of work of organisations</li> <li>• Supporting regional work</li> <li>• Taking ownership and accountability</li> </ul>	<ul style="list-style-type: none"> <li>• Issue resolution</li> <li>• Facilitating communication</li> <li>• Supporting regional work</li> <li>• Supporting and supporting local organisations</li> </ul>
Tracking the views of the Sector	<ul style="list-style-type: none"> <li>• Communicating views on national work</li> <li>• Local responses for gathering, digesting and sharing views</li> </ul>	<ul style="list-style-type: none"> <li>• Leadership through communication on work</li> <li>• Communicating with national organisations</li> </ul>	<ul style="list-style-type: none"> <li>• Cooperation and communication</li> <li>• Supporting local work</li> <li>• Representing and supporting local organisations</li> </ul>

Community Sector Taskforce

### Functions and Focus

ACTIVITY	NATIONAL LEVEL	REGIONAL LEVEL	LOCAL LEVEL
Research/policy analysis	<ul style="list-style-type: none"> <li>Tangata Whenua/Tangata Tiriti together modelling good Tiriti/Treaty of Waitangi relationships</li> <li>Leading research initiatives for the Sector</li> </ul>	<ul style="list-style-type: none"> <li>Collective approaches to problem solving and policy development</li> <li>Tiriti/Treaty relationship approach to researching regional issues</li> </ul>	<ul style="list-style-type: none"> <li>Community wide view of local needs</li> <li>Relationships development into analysis</li> <li>Tangata Whenua and Tangata Tiriti working together</li> </ul>

Community Sector Taskforce

### Functions and Focus

ACTIVITY	NATIONAL LEVEL	REGIONAL LEVEL	LOCAL LEVEL
Information sharing Good practice	<ul style="list-style-type: none"> <li>Promote initiatives informed by Sector methods/try</li> <li>Support the sharing of good ideas/ successes</li> <li>Self regulation/ operating standards that reflect value to whole communities</li> </ul>	<ul style="list-style-type: none"> <li>Better use of existing regional resources</li> <li>Region-wide projects that improve what the Sector does for communities</li> <li>Support community organisations</li> </ul>	<ul style="list-style-type: none"> <li>Local networking</li> <li>Sharing of ideas</li> <li>Shared resources</li> <li>Shared services</li> </ul>

Community Sector Taskforce

### Functions and Focus

ACTIVITY	NATIONAL LEVEL	REGIONAL LEVEL	LOCAL LEVEL
Capacity building	<ul style="list-style-type: none"> <li>Projects that strengthen the Sector</li> <li>Sponsoring of initiatives to develop sustainability</li> </ul>	<ul style="list-style-type: none"> <li>Identified regional projects that address staff and volunteer needs</li> </ul>	<ul style="list-style-type: none"> <li>Identified local projects that address staff and volunteer needs</li> </ul>

Community Sector Taskforce

### Projects

Sector Leadership & Strategic Direction Setting	<ul style="list-style-type: none"> <li>Promoting volunteering</li> <li>Building local government relationships</li> </ul>
Voicing the views of the Sector	<ul style="list-style-type: none"> <li>Charities Commission processes</li> <li>Taxation</li> </ul>
Research/Policy Analysis	<ul style="list-style-type: none"> <li>Research &amp; Knowledge Centres</li> </ul>
Information Sharing/Good Practice	<ul style="list-style-type: none"> <li>Food Practice Initiatives – OSH, Taxation, Funding &amp; Resourcing</li> </ul>
Capacity Building	<ul style="list-style-type: none"> <li>IT, Governance, Finances, Media etc</li> <li>Regional and sub-sector initiatives</li> </ul>

Community Sector Taskforce

- ### Forum
- 160 participants – From Bluff to the Far North
  - Tangata Whenua (1/3) and Tangata Tiriti (2/3)
  - Sector spread
    - Health, Education & Social Services
    - Iwi, hapu, runanga, trust boards
    - Community enterprise
    - Arts and culture
    - Environmental
    - Regional and national umbrellas
    - Pasifika, Ethnic and Faith communities
    - People with disabilities
    - Social Justice
- Community Sector Taskforce

- ### Next Steps
- An ongoing National Leadership Group resourced to do the work
  - Regular meetings of national umbrellas and sector leaders
  - Two yearly national sector forum
  - Regional and local forums
  - Business plan and work programmes
  - Regular engagement with the Minister
  - Call the Government to honour and implement the Statement of Government Intent
- Community Sector Taskforce

## Caucus Session # 1

### Facilitators

Peter Glensor – Co-Chair, Community Sector Taskforce  
 Tony Spelman – Co-Chair Community Sector Taskforce

### Process

All participants were divided into Caucuses according to their Treaty/Tiriti House to discuss the following points:

- What do we want to achieve?
- Why are we running this workshop?
- What does this model mean for you and how can we support you to achieve it?
- Some practical ways to look and learn and have some support to do some work on it
- Sharing stories on how this may work

- Working in two worlds
- What does this mean for your group/s
- Real life examples
- Vision/Successes

### **Evaluation**

I found this session useful.

*(1 = strongly disagree, 2 = disagree, 3 = neutral, 4 = agree, 5 = strongly agree)*

1	2	3	4	5	Total
-	3	6	18	15	<b>42</b>

### **Comments**

- Awesome to meet and share experiences
- Group was too large
- Hearing difficult to capture ideas expressed
- Lack of clarity around purpose of session
- Needed effective facilitators to keep group focused
- Regional focus group would be good
- Miscellaneous:
  - Good to hear how other organisations are structured (including using the two-house model)
  - Group was small
  - Limited space
  - Not enough time
  - Should have met a day before to discuss whenua input before National Forum

## **Combined House**

### **Facilitators**

Peter Glensor – Co-Chair, Community Sector Taskforce

Tony Spelman – Co-Chair Community Sector Taskforce

### **Process**

Each caucus then returned to the combined house and reported on the outcome of their discussions.

### **Feedback**

- Independence:
  - Build strong communications network with and by communities of interest
  - Continue to implement practical projects that strengthen the sector
  - From Government
  - Strong collective voice(s) through CST
- Strategic Leadership:
  - Actively lead initiatives and advocate and lobby issues affecting the sector
  - Continue to build relationships and engage with other CTV sectors such as sports and art
  - Regional and national importance – value of national (sub-sector) organisations role

### **Evaluation**

I found this session useful.

*(1 = strongly disagree, 2 = disagree, 3 = neutral, 4 = agree, 5 = strongly agree)*

1	2	3	4	5	Total
-	3	-	17	23	43

### Comments

- Clear overview
- Excellent presentation
- Good role modelling of the two-house model
- Miscellaneous:
  - A movement, not an entity
  - As an organisation already working together and have moved on
  - Broader issues that affect all aspects of the sector (funding, sustainability, networking) – how the sector can more effectively serve people
  - Didn't allow for intense discussion and feedback
  - Do not share opinion that Treaty issue is the fundamental concern of this sector. Should have been an optional caucus
  - Endorse Treaty based kaupapa:
    - Continue to build awareness and need to resource knowledge
  - Relevance of the model as an ongoing thing – of value to your organisation
  - Taskforce runs the risk of being bound by historical conflicts and not being able to move on with an open gesture, positively
  - To not be timid in articulating our understanding
  - Usefulness?

# Strengthening the Sector

## COmVOiceS

### Facilitators

COmVOiceS members:

- Tim Burns – Volunteering NZ
- Naj Dehlavi - NZFVWO
- Andrea Goble – Funding Information Services
- Dave Henderson - ANGOA
- Anna Kominik – Ideas Shop
- Iris Pahau – National Development Manager, Community Sector Taskforce
- Chris Wikaira - Busby Ramshaw Grice

### Process

Introduction and history was presented by COmVOiceS members and then Anna and Chris presented some handy hints around the following topics:

- Working with the media
- What makes news?
- What is the media?
- Ways of pitching to the media
- Doing an interview
- Interviewing guidelines

Caucuses had practical experience of preparing a media statement and then report their findings to the workshop. Participants were provided the following handouts and requested to complete an evaluation sheet:

- Communications Toolkit
- History of COmVOiceS

### Feedback

- A process – sort out the key issues
- Not one voice – a vehicle for our many voices
- This is a way to express the strength of our sector, to build our own identity and self-respect as a sector, and to build respect from Government
- We did with a group of national organisations
- What are the key issues in your region

### Evaluation

I found this session useful.

*(1 = strongly disagree, 2 = disagree, 3 = neutral, 4 = agree, 5 = strongly agree)*

1	2	3	4	5	Total
-	1	1	3	4	9

### Comments

- Good to reaffirm ideas
- Miscellaneous:
  - As an organisation we had done media training recently
  - Public image is most important to our success as a multi-cultural group



- Personnel exchange (secondments or internship)
- Plunket/Playcentres - good training ground
- Practical solutions and resources to key areas e.g. health, education (more dollars)
- Stronger collective voice to decision makers through CST with a Pasifika view
- Training critical to avoid vulnerability:
  - Community development – education, gauge status, engage
  - Community knowledge enables service delivery
  - Organisation – infrastructure, governance, workforce
- Training unit – community – Parenting Programme and Parent Support:
  - Need the skill to attract funding to do training
- Training unit – organisation
- Tuakana – Teina System
- Urban-Maori model – get out and do the walk
- Valuing Pasifika strengths, talents and resources, cultural identity
- Victim Support examples - rules and regulations (definite)
- Websites out there with info – get in touch with what's happening
- Workforce development a major:
  - Increase of skilled workers
  - Scholarships
- Youth focus – proactive solutions

#### How do we get the blend?

- Can grow in a mainstream organisation
- Maori and other:
  - Mix and teach each other
- Personnel – Peers

#### How do we give it on?

- Acquiring skills – do it in a way that is comfortable and appropriate

#### Taha Maori Framework

- Community leadership – community network
- Established by kaumatua for kaumatua:
 

Kahui Kaumatua	Skill Built	Governance
Tikanga		Trustees
- Everything happens in the collective context but is community driven
- Face to face asking what they want to do
- Hands-on approach
- Holistic
- I have been born to ...
- Marae, whanau, manaakitanga
- The teachings of the Nannies to be continued:
  - Karakia
  - Mihi
- No such thing as an umbrella group, National body, it is all around us
- Opportunity to work with whanau one on one
- Pakeke – Rangatahi – Tamariki

#### Recommendations

- Capacity building for the sector should be done by the sector

- Capacity building happens locally, regionally and nationally
- Capacity building should be community driven, not government driven
- Government and philanthropic sector needs to resource capacity building within the sector
- People to people, kanohi ki te kanohi is the best capacity building

### **Evaluation**

I found this session useful.

*(1 = strongly disagree, 2 = disagree, 3 = neutral, 4 = agree, 5 = strongly agree)*

1	2	3	4	5	Total
-	3	5	10	7	25

### **Comments**

- Good practical tools
- Good to share experiences
- Groups were too large
- Insufficient time for discussion
- No clear definitions
- Required separate space for groups
- Risk Management not included
- Miscellaneous:
  - I never realised how well our organisation was managing in this area
  - It was awesome
  - Needs to be structured differently to gain best value and progress
  - Thought there would be more discussion/presentation on capacity building

### **Advocacy**

#### **Facilitators**

Dr Gill Greer - Health and Disability Sector NGO-MoH Forum Working Group  
 Carole Maraku - Health and Disability Sector NGO-MoH Forum Working Group

#### **Process**

The Facilitators delivered discussions around the following:

- The A Word – What went wrong with advocacy?
- What is Advocacy
- The issue today
- In planning our advocacy we need to consider what are the issues and which ones we want to influence, remembering that we can only influence the future, we cannot influence the past. What happened?

The participants were then divided into caucuses where the discussed the following:

- Current issues which need to be raised with government as part of advocacy activities:
- Are there any examples you can give which could be used without identification of changes to contracts?
- What do you think is the way forward?
- Any other relevant issues?

#### **Feedback**

Groups then reported back to the workshop on “What do we do?”

- Accept that political neutrality doesn't exist

- What are the boundaries/limits
- Advocate for grants not contracts
- Ask Taskforce and other organisations to take up the issue
- Difference between grants and contracts – argue for grant mode
- Link to the Charities Commission and processes
- Need to argue that service providers are also advocates
- Need to deal with both the bureaucracy and the government
- Two strategies:
  - survive/different word or ...
  - try to change the situation
- Use the MP's to share our view

### **Evaluation**

I found this session useful.

*(1 = strongly disagree, 2 = disagree, 3 = neutral, 4 = agree, 5 = strongly agree)*

1	2	3	4	5	Total
-	-	-	8	7	15

### **Comments**

- Interaction was great
- Very informative
- Miscellaneous:
  - Community Sector Taskforce make a stand with us – stand staunch regarding advocacy
  - More work needed from here on
  - Reinforced work we have to do to support our kaupapa

# Strengthening Relationships with Government

## Engagement with Local Government

### Facilitators

Barbara McLennan - Ex-National Development Manager, Community Sector Taskforce  
Atareta Poananga – Community Sector Taskforce Member  
Sharon Torstonson – Community Sector Taskforce Member

### Process

A presentation was given on the following statements:

- The critical issues facing Maori and local government is the issue of power. The treaty envisages a power sharing relationship with Tangata Whenua. That promise has never been fulfilled. Atareta is going to talk about the big picture issue of power, because until the Power Gap is closed, closing the gaps policies as articulated by Government will never deliver to Iwi/Maori at local government level. We are not talking about lower order level of delegated administrative power; we are talking about the nature of one sovereignty, one law approach.
- Setting governance relationships right and putting them on a level footing is the key issue to address first before anything else. It is making the Treaty work in a meaningful and practical way. Before we know where we are going, we have to know where we have been and where we are now. Iwi/Maori are totally disempowered through policies and practices of colonization and this continues to this day:
  - The Treaty of Waitangi
  - Sharing Power in Local Government
  - Iwi Nationhood

An overview of the new local government legislation was given and the opportunities it provides for the Tangata Whenua, Community & Voluntary Sector to influence the future. It also included an overview of the NZCOSS research as one of the possibilities and challenges for the Sector in this new process.

### Feedback

- Ask your local government about what process they used to reach STV decision
- Changing attitudes/knowledge base of politicians and citizens
- Government in UN is promoting “One law for all” in discussion on draft Declaration of Rights of Indigenous People
- How to challenge politicians who understand Treaty obligations to act in line with that
- How to counteract the “them and us” attitude in the Pakeha communities
- How to get STV (more Maori, youth, and women in governance?) Currently discretionary with many hurdles. Can we learn from DHBs? Recommendation – that we develop an educational campaign and at the same time promote STV
- Including at school – curriculum needs to include:
  - Te Tiriti in action – trainee teachers need to be competent and knowledgeable in this area. BUT simply providing information/training doesn't necessarily change attitudes
- Need broader processes not individualised responses:
  - We are talking about changing power – this causes discomfort
  - Need to work actively at grassroots/flax roots level and work up AS WELL AS working for constitutional change at national level.
- Need careful strategising for specific audiences:
  - Front up and speak to submissions – kanohi ki te kanohi
- Need to work on how to summarise this hui – language that we use to describe is important

- Recommendation to the Taskforce and hui - Maori Working Group on Local Government
- Use Community Outcome process – more Maori, youth and women in governance as a named outcome
- Use Council Zone meetings – regional gatherings
- Whakatauki referent to “law” – this does not mean current legal model, but “lore”

### Kaupapa

- Campaign – kaupapa of educating whanau on all kaupapa especially STV, Maori electorates
- Changes to RMA, Te Tiriti, Mana Whenua, Tangata Whenua obligations in RC consultation
- Consultation of planning (LTCCP and community outcomes)
- Have meeting place process to make constitutional change in Local Government
- Obligations be consistent in LTCCP process and outcomes
- Representation of Maori/Local Government
- Representatives of taskforce be inclusive of Mana Whenua/Tangata Whenua/regions/mahi and whanau
- Review of Electoral Act to implement STV and Maori electorates/wards
- Review of Local Government Act from Te Tiriti perspective

### Evaluation

I found this session useful.

(1 = strongly disagree, 2 = disagree, 3 = neutral, 4 = agree, 5 = strongly agree)

1	2	3	4	5	Total
-	2	4	8	6	20

### Comments

- Good focussed discussion
- Great informative presentations
- Issues for Tangata Whenua/Maori overtook workshop
- Some clear actions identified
- Wanted to see other presentations
- Miscellaneous:
  - Good to involve government but then what
  - No focus on successes
  - Probably not for me so may have worked for others

## Research by and for the Sector

### Facilitators

Peter Glensor – Co Chair, Community Sector Taskforce

Margy-Jean Malcolm - Unitec NZ

Jo-Ani Robinson - He Kainga Oranga, Housing and Health

Tu Williams – Committee for the NZ Study of the Non-Profit Sector

### Process

Two main topics were discussed:

Firstly a proposal to establish a Centre of Excellence in Tangata Whenua, Community and Voluntary Sector Research. The Centre would be a partnership between the sector and tertiary institutions. The Centre's aims include:

- To promote research in, by, for and about the community and voluntary sector.
- To reflect the highest standards of excellence in research.

- To establish and maintain a living relationship with universities on how to undertake research appropriate to the community and voluntary sector.
- To conduct research, and to stimulate research by others.
- To disseminate research findings from all relevant sources including from other countries.

Members of the Working Group will report on the work done to date. The workshop participants will plan the next steps in making the Centre a reality.

Secondly, work being done nationally on gathering information about our sector. An Advisory Committee for the Study of the Non-Profit Sector has been set up to advise Statistics NZ on the creation of 'Non Profit satellite accounts'.

Workshop participants then divided into caucuses to plan the next steps and to provide feedback on the projects.

### **Feedback**

- Research collaboration:
  - Encourage government to actively support and resource the Centre of Excellence and collaborative research
  - Endorsed John Hopkins and satellite account work
  - Endorsed the process/consultation system it used

### **Evaluation**

I found this session useful.

*(1 = strongly disagree, 2 = disagree, 3 = neutral, 4 = agree, 5 = strongly agree)*

1	2	3	4	5	Total
1	-	2	8	9	20

### **Comments**

- Essential element
- Fully support both projects presented
- Informative dialogue/discussion
- Miscellaneous:
  - Concerned that we are building another empire
  - Controversial element
  - Like to see more sharing between Government mainstream and others
  - Use the resources better

## **Sharing & Learning**

### **Facilitators**

Weng Kei Chen – Community Sector Taskforce Member  
Pania Coote – Community Sector Taskforce Member

### **Process**

This workshop was an opportunity for some organisations to share stories about their activities in the community. The groups that presented were:

- Ruth Cleaver - Auckland Interfaith Council
- Donna Smith & Larinda Kershaw - Frankton Dinsdale Rauawaawa Charitable Trust – Kaumatua Services
- Tanumafili Toso - Pacific Island Disability Group
- Tina Reid & Leon Hawea – MSD/NGO Relationship Group

### **Evaluation**

I found this session useful.

*(1 = strongly disagree, 2 = disagree, 3 = neutral, 4 = agree, 5 = strongly agree)*

1	2	3	4	5	Total
-	-	1	8	7	16

### **Comments**

- Excellent opportunity to learn about various projects and initiatives
- Great presentations
- Time an issue

## **Plenary Session # 2**

### **Facilitators**

Peter Glensor – Co-Chair, Community Sector Taskforce  
Tony Spelman – Co-Chair, Community Sector Taskforce

### **Process**

Peter and Tony facilitated this session which was to prepare a draft of the findings/outcome of the National Forum to present to the Minister for the Community & Voluntary Sector, Winnie Laban.

The attendees were then divided into caucuses to discuss whether there were any suggested changes to the present draft. Everyone then returned to the main plenary room to provide feedback which resulted in some subtle changes to the original draft.

### **Evaluation**

I found this session useful.

*(1 = strongly disagree, 2 = disagree, 3 = neutral, 4 = agree, 5 = strongly agree)*

1	2	3	4	5	Total
-	3	2	17	12	34

## Comments

- Commitment from all
- Consensus sought ideas collectively shared
- Nice to see two-house/Treaty-based process
- Not enough time for meaningful discussion
- Very good “homework” done
- Miscellaneous:
  - Difficult to amalgamate all views
  - Listen to the communities/volunteers in sectors not just those paid to manage/provide the services
  - Need clearer decision making processes for consensus
  - Should have happened on first day. Seems some hidden agendas in some workshops/forums i.e. came to the combined house Hui to “see” a submission to support “research” in the proposal. I don’t know about the “research” proposal and hope to have input at local/regional level! Added to the proposal and good intention BUT process felt like a government process!

## Presentation to the Minister

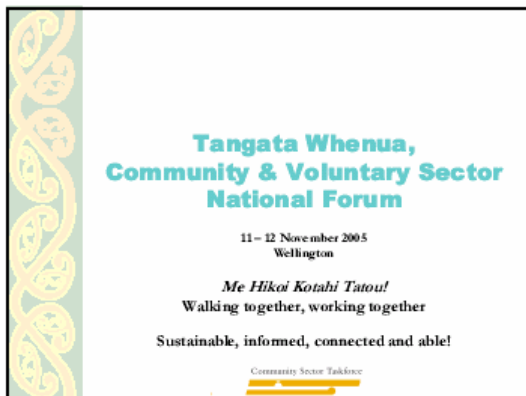
### Facilitation

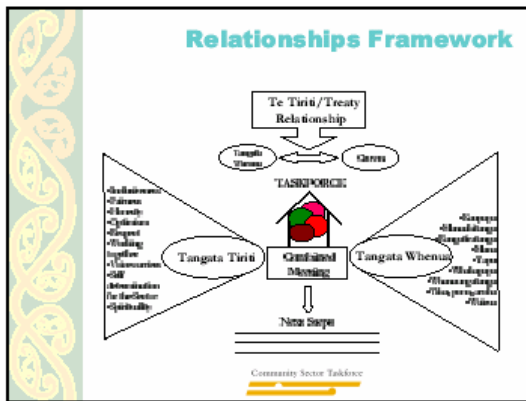
Peter Glensor – Co-Chair, Community Sector Taskforce  
Tony Spelman – Co-Chair, Community Sector Taskforce

### Process

The Minister was accorded a powhiri by the Taskforce and the participants of the Hui. The following presentation was then delivered by the Co-Chairs to the Minister.

### Presentation





- ### Key Themes
- Supporting the strength of the Sector
    - Tangata Whenua, Community & Voluntary Sector driven
    - Weaving skills and our own knowledge and practice at individual, group, organisational and sector levels
    - Valuing the extent of voluntary contributions made to the sector and to society
  - Endorsing the Independence of the Sector
    - Continue with COMVOICE
    - Supporting the Research network
    - Accountability to our communities, whanau, hapu, iwi
    - Developing strong relationships with central and local government
    - Seizing and maintaining the right to speak out and retain autonomy regardless of government funding

### Projects

Sector Leadership & Strategic Direction Setting	<input checked="" type="checkbox"/> Promoting volunteering <input checked="" type="checkbox"/> Building local government relationships
Voicing the views of the Sector	<input checked="" type="checkbox"/> Charities Commission processes <input checked="" type="checkbox"/> Taxation
Research/Policy Analysis	<input checked="" type="checkbox"/> Research & Knowledge Centres
Information Sharing/ Good Practice	<input checked="" type="checkbox"/> Good Practice Initiatives – OSH, Taxation, Funding & Resourcing
Capacity Building	<input checked="" type="checkbox"/> IT, Governance, Finances, Media etc. <input checked="" type="checkbox"/> Regional and sub-sector initiatives

- ### Forum
- 160 participants – From Bluff to the Far North
  - Tangata Whenua (1/3) and Tangata Tiriti (2/3)
  - Sector spread
    - Health, Education & Social Services
    - Iwi, hapu, runanga, trust boards
    - Community enterprise
    - Arts and culture
    - Environmental
    - Regional and national umbrellas
    - Pasifika, Ethnic and Faith communities
    - People with disabilities
    - Social justice

- ### Next Steps
- An ongoing National Leadership Group resourced to do the work
  - Regular meetings of national umbrellas and sector leaders
  - Two yearly national sector forum
  - Regional and local forums
  - Business plan and work programmes
  - Regular engagement with the Minister
  - Call the Government to honour and implement the Statement of Government Intent

## The Minister's Address

The Minister then responded with her address:

“Tena koutou katoa, Kia Orana, Taloha ni, Fakalofa lahi atu, Ni sa bula vinaka, Malo e lelei, Talofa Lava, Mauri, Gud de tru and Warm Pacific Greetings to you all.

Thank you for the invitation to speak to the national community sector hui. I am pleased to be here and to be able to participate in today's conference with you.

It seems fitting that my first public engagement as Minister for the Community and Voluntary sector is here with you , a broad representation of community interests from across Aotearoa New Zealand.

This is a new role for me and my job at this stage is to listen, to hear from you first hand issues and trends that are common to the sector and your ideas on progressing the conversation with government.

I would like to acknowledge the hard work and time you and your families have contributed to your communities at a local, regional and national level. Quite often it seems that we can only engage in voluntary work and volunteering if we have a supportive partner and family.

Before I go any further I would like especially to acknowledge the work of the Community Sector Taskforce which has organised this hui and provided the opportunity for you to come together to discuss the issues of concern to you as organisations and individuals working both in paid and voluntary capacity in the community and voluntary sector.

My other ministerial responsibilities also include Associate Minister for Pacific Island Affairs, Social Development and Employment and Economic Development, which have a strong connection to my role as Minister for the Community and Voluntary Sector. These four portfolios I believe blend beautifully together and I am expecting to broker positive relationships between business, civil society groupings and government agencies.

I have a long personal history of community service and have worked in the voluntary, government and private sectors both in New Zealand and overseas and I want us all to work better together.

I have had broad experience on a number of boards and committees to do with mental health, women, justice, foreign affairs and consumer affairs. I am keenly aware of the breadth and depth of the sector.

I would like to acknowledge the incredible diversity of the community and voluntary sector.

The community and voluntary sector provides an array of services and activities that are vital to the social, economic, environmental and cultural wellbeing of New Zealand.

As we all know, the organisations that make up the community and voluntary sector provide so many vital services and so much essential support to our communities. These include community organisations working in sub-sectors such as arts and culture, sports, recreation, health, education, and emergency services and organisations working with specific populations such as young people or older people.

While all of these sub-sectors are distinct and have their own issues, they have many issues in common and this is why you are here today.

Community and voluntary organisations can often do things that government agencies cannot do.

To achieve many of their goals, the community and voluntary sector and government agencies are interdependent. Good relationships are, therefore, essential.

The signing of the Statement of Government Intentions for an Improved Community-Government Relationship in 2001 demonstrated Government's commitment to these relationships.

It is important to continue this work of improving and strengthening relationships at all levels.

This work is challenging for us all and like any relationship needs to be worked on.

My portfolio is supported by two agencies, the Office for the Community and Voluntary Sector within the Ministry of Social Development and the Department of Internal Affairs.

These agencies work closely together.

The Office for the Community and Voluntary Sector provides an accessible central contact point for government agencies in their work with the community and voluntary sector.

It works to respond to overarching policy issues affecting the community and voluntary sector and raises the profile of community, voluntary and Maori organisations within government.

It has five inter-related parts to its work programme involving:

- supporting work to build the capacity of the sector, such as the recently published resource *Managing Well*, a catalogue of resources for community and voluntary organisations, that was produced with Family and Community Services
- building knowledge of the community and voluntary sector, for example, work on the study of the New Zealand non-profit sector that will help to provide a clear picture of the nature and extent of non-profit sector activity within New Zealand
- providing other government agencies with policy advice on addressing issues for the community and voluntary sector
- actively supporting the development and promotion of good practice by government agencies when engaging with the sector, for example through a 'good practice in action' seminar series and through the good practice participate website
- promoting volunteering, for example, developing resources for International Volunteer Day on 5 December.

The Department of Internal Affairs' work in my portfolio includes:

- "assisting the recently established Charities Commission to develop its relationship with the sector, which currently includes consulting on the application forms for registration
- "leading key community aspects of the government's Digital Strategy, particularly the administration of the new Community Partnership Fund
- "hosting a website, <http://www.community.net.nz> which holds up to date useful information for community and voluntary groups
- "administering a number of Crown Funded Schemes including the Community Organisation Grants Scheme (COGS), the Community Development Fund, and the Community Internship Programme
- "provides community advisors, based in 16 offices across the country, who work with all community members to support their development projects. The advisers bring local government, businesses, and other government agencies together to focus on the needs of communities. They provide information that community members need to advance their own development.

Finally, I am looking forward to having further contact and discussion with many of you as I work into my new role of Minister for the Community and Voluntary Sector.

My intention for this current term of government is to meet with a number of different community leaders and grassroots organisations from across the community spectrum – so I expect our paths, will over time, again cross.

Once again thank you for your invitation today, it provides me with an opportunity to listen and become familiar with your discussion on the key issues of the community and voluntary sector.

## **Caucus Session # 3**

### **Process**

The National Forum attendees were then requested to return to their regional caucuses (according to the colours of their tags); to discuss how each region was going to implement the outcomes of the Hui and to discuss:

- What do we take from the National Forum?
- Next Steps Forward

### **Evaluation**

I found this session useful.

(1 = *strongly disagree*, 2 = *disagree*, 3 = *neutral*, 4 = *agree*, 5 = *strongly agree*)

1	2	3	4	5	Total
-	3	11	13	8	35

### **Comments**

- Good opportunity to share local differences
- Good opportunity to share regional differences
- Great to get it started!
- Group was too large
- Separate groups as local, regional, national
- Time given limited
- Miscellaneous:
  - Challenging – needed definite priorities to reflect to Minister
  - Preferred template for operational plans
  - Space, precise actions to be undertaken

## **Poroporoaki & Karakia/Closure for the Forum**

### **Process**

The Taskforce presented gifts to those who assisted in the success of the National Forum. The Co-Chairs thanked the Brentwood Hotel Management and Staff for their contribution to the Hui and then returned the mana to the mana whenua for closure. Wereta Pahau, as a representative of the Tangata Whenua, accorded the National Hui with a Poroporoaki korero and a Karakia and the participants finished the hui with a himene whakamutunga.

### **Evaluation**

I found this session useful.

(1 = *strongly disagree*, 2 = *disagree*, 3 = *neutral*, 4 = *agree*, 5 = *strongly agree*)

1	2	3	4	5	Total
-	-	3	4	12	19

### **Comments**

- Great ending to a useful two days
- Miscellaneous:
  - Could not attend
  - Impressive observation and how to move forward
  - Welcome overlap long to Minister

# Finances

## Financial Guidelines

The Taskforce had adopted a protocol that assistance for travel would be available to those organisations/individuals who could not afford to pay their own travel. However, if any organisation could contribute a portion of the travel, payment of that contribution would be 'encouraged'.

All meal costs would be met by the Taskforce. One night's accommodation for attendees residing outside of Wellington would also be paid for.

## National Forum Co-ordinator

The Taskforce employed a National Forum Co-ordinator whose responsibility was to work with the Hotel in the management of the Forum i.e. accommodation, meals, venue etc.

## Actual vs. Budgeted

	<b>Actual</b>	<b>Budget</b>	<b>Variance</b>
<b>Income</b>			
OCVS	\$45,000.00	\$45,000.00	\$0.00
Registrations	\$4,355.18	\$5,000.00	(\$644.82)
Travel Contribution	\$88.89	\$500.00	(\$411.11)
<b>Total</b>	<b>\$49,444.07</b>	<b>\$50,000.00</b>	<b>(\$555.93)</b>
<b>Expenditure</b>			
Accommodation	\$7,943.90	\$8,600.00	(\$656.10)
Administration & Co-ordination	\$13,561.25	\$15,000.00	(\$1,438.75)
Facilitation	\$378.24	\$290.00	\$88.24
Food	\$11,502.21	\$17,110.00	(\$5,607.79)
Travel & Accommodation	\$13,873.15	\$8,266.30	\$5,606.85
<b>Total NATIONAL FORUM</b>	<b>\$47,258.75</b>	<b>\$49,266.30</b>	<b>(\$2,007.55)</b>

# Tangata Whenua Declaration

The Maori declaration, a summary statement, was developed from all forums and hui held around the country and was the consensus of all Maori present. It sets out the base position unpinning the work of the Taskforce as follows:

- We are a first nations people;
- The basis of our identity is Whanau, Hapu, Iwi and through whakapapa we link the land, the people and all living things in our world;
- We are culturally diverse as Iwi/Maori but through the practice of tino rangatiratanga we can act in the interests of all peoples, the land and our environment;
- Our beliefs come from Te Ao Maori. Our practice of tikanga Maori includes the disciplines of mana, rangatiratanga and manaakitanga;
- Tikanga sets the framework for our governance and also defines, regulates and protects the rights of whanau and hapu;
- Our marae are expressions of our culture, tikanga, values and principles which sustain our uniqueness;
- The importance of consensus decision making stems from the need to work collectively to get things right – weaving the people together;
- An holistic approach to leadership is needed in order to practise accountability to Whanau, Hapu and Iwi – ko te iwi te rangatira o te rangatira – people are the chiefs of the chiefs;
- For a Tiriti/Treaty relationship to bear fruit for all people of Aotearoa/New Zealand the one-world view of the Crown needs to open up to Te Ao Maori;
- Through a negotiated view of the kawanatanga function, leading to a more active involvement of Maori in governance activity for all people, the needs of New Zealanders, via the Community and Voluntary Sector, will be addressed more fully, more effectively and in a more sustainable manner.
- The acknowledgment of Te Ao Maori and the respect for tino rangatiratanga will assist the reform of the kawanatanga function in the interest of all peoples, the land and all living things;
- We are committed to governing ourselves through the expression of mana motuhake, our enduring power leading to our self-determination.

# Tangata Tiriti Declaration

This Declaration reflects the voices of Tangata Tiriti - Pakeha, Pacific and other non-Maori ethnic groups within the community and voluntary sector. We celebrate that we are placed in this land of Aotearoa/New Zealand founded on the basis of a contract binding Tangata Whenua and Tangata Tiriti in relationships of trust and mutual honour. We celebrate our proud history of freedom of association and freedom of speech, enriched by the contribution of countless people through volunteer service.

## **We are everywhere**

- For just about every place, every interest, every activity, every type of person, every ideal – there's a club, a society, a trust, a committee.

## **We are part of everyone's lives**

- Every person and their family contributes to our sector and/or benefits from what we do.

## **We are values based**

- We are driven by a particular purpose, ideal, or vision, and we have a set of values by which we live.

## **We are diverse**

- We are as proud of our unique differences as we are of what binds us together.
- We change as needs change, as communities change, as time passes.

## **We are voluntary**

- Our existence is not compulsory, but comes from the choice of people.
- We rely on the energy, skill and goodwill, the gifts of time and other resources, of countless individuals both voluntary and paid.

## **We are advocates**

- There are ideals, people, principles, specific situations, which brought us into being, and we will always be impelled to “speak for” them, whatever else we do.

## **We are not-for-profit**

- Even when we are large and complex, the reason for our being is our original vision – being business-like is a means not an end.

## **We are community-linked**

- We all have people as our base – and we always need to be responsive to them.

## **We are accountable**

- We must give account of what we are doing, and how – our members & our communities decide our direction.

## **We contribute to community wellbeing**

- There is an “added value” to our life and work– the binding together of families, of whanau, of communities – because of our shared vision and shared effort.

**We are multi-cultural and multi-ethnic**

- We are immensely enriched by the work and life of communities from ethnic groups originating from all over the world.

**We are worldwide**

- Many of us have important international links and we interact with others around the globe.
- We are placed in this one world, with its natural and physical environment, and we believe together we can enrich both the earth and those who inhabit it.

**We wish to live up to Te Tiriti/The Treaty of Waitangi**

# Appendix I

## National Forum Attendees

Surname	Given Names	Organisation	Email
Awa	Hori	CST Member	<a href="mailto:awa@hori.co.nz">awa@hori.co.nz</a>
Barrett	Georgina	Pomare Community House	<a href="mailto:georgiebarrett@paradise.net.nz">georgiebarrett@paradise.net.nz</a>
Beaven	Rod	Ashburton Council of Social Services	
Bent	Bronwyn	Arts Access Aotearoa	<a href="mailto:bronwyn_bent@artsaccess.org.nz">bronwyn_bent@artsaccess.org.nz</a>
Bidois	Te Rangikaheke	Rotorua District Council	<a href="mailto:terangikaheke.bidois@rdc.govt.nz">terangikaheke.bidois@rdc.govt.nz</a>
Brown	Shell	Ahu Whakatika/Challenge Violence Trust	<a href="mailto:cvt@ro.pl.net">cvt@ro.pl.net</a>
Brown	Roscoe	Te Whanau Whakapono Services Maraenui	<a href="mailto:rosscoebrown@hotmail.com">rosscoebrown@hotmail.com</a>
Bullen	Joy	Timberlea Community House	<a href="mailto:joy.bullen@xtra.co.nz">joy.bullen@xtra.co.nz</a>
Burns	Tim	Volunteering New Zealand	<a href="mailto:ed@volunteeringnz.org.nz">ed@volunteeringnz.org.nz</a>
Burt	Peter	Supergrans Aotearoa Inc	<a href="mailto:aotearoa@supergran.org.nz">aotearoa@supergran.org.nz</a>
Carr	Louise	PACT Group	<a href="mailto:louise.carr@pacgroup.co.nz">louise.carr@pacgroup.co.nz</a>
Chapman	Alan	Health & Disability Sector NGO-MOH Forum Working Group	<a href="mailto:sioala@xtra.co.nz">sioala@xtra.co.nz</a>
Chen	Weng Kei	CST Member	<a href="mailto:wengkei.chen@ccc.govt.nz">wengkei.chen@ccc.govt.nz</a>
Chile	Love	IPP-AUT University	<a href="mailto:love.chile@aut.ac.nz">love.chile@aut.ac.nz</a>
Cleaver	Ruth	Auckland Interfaith Council	<a href="mailto:ruth@cleaver.co.nz">ruth@cleaver.co.nz</a>
Clarke	Alison	Education	<a href="mailto:alison.clark@xtra.co.nz">alison.clark@xtra.co.nz</a>
Collins	Liz	Literacy Aotearoa	<a href="mailto:olivia.collins@actrix.co.nz">olivia.collins@actrix.co.nz</a>
Conroy	Philippa	ACE Aotearoa Inc	<a href="mailto:nrc@nrc.org.nz">nrc@nrc.org.nz</a>
Coote	Pania	CST Member	<a href="mailto:ptcoote@jhug.co.nz">ptcoote@jhug.co.nz</a>
Crowther	Kaye	NZ President, Royal New Zealand Plunket Society (Inc).	<a href="mailto:kaye.crowther@plunket.org.nz">kaye.crowther@plunket.org.nz</a>
Cursey	Moira	Waikato Biodiversity Forum	<a href="mailto:m.cursey@xtra.co.nz">m.cursey@xtra.co.nz</a>
Davis	Johnine	Tiaki Tangata, Huntly	<a href="mailto:Johnine.Davis@waic.govt.nz">Johnine.Davis@waic.govt.nz</a>
Dehlavi	Naj	NZFWO	<a href="mailto:comms@nzfwo.org.nz">comms@nzfwo.org.nz</a>
Douglas	Kindra	Community & Whanau, Nelson	<a href="mailto:kinliz@clear.net.nz">kinliz@clear.net.nz</a>
Edwards	Louise	Te Kaiwhina Ahumahi	<a href="mailto:titiag@kaito.co.nz">titiag@kaito.co.nz</a>
Elborn	Sheryn	NZ Federation of Ethnic Councils	<a href="mailto:executive@nzfec.org.nz">executive@nzfec.org.nz</a>
Faatui	Malama	Pacific Health Services, Hutt Valley	
Faiumu-Isa'ako	Ida	Canons Creek Fanau Centre	<a href="mailto:ida@phsportua.co.nz">ida@phsportua.co.nz</a>
Feiki	Stone	Pacific Mental Health (Vakaola)	<a href="mailto:hfeiki@clear.net.nz">hfeiki@clear.net.nz</a>
Fowlds-Hartley	Bob	Papawai Marae	<a href="mailto:amandafnz@yahoo.co.nz">amandafnz@yahoo.co.nz</a>
Fox	Raewyn	NZ Federation of Family Budgeting Service Inc.	<a href="mailto:nzbudget@xtra.co.nz">nzbudget@xtra.co.nz</a>

Surname	Given Names	Organisation	Email
Gatenby	Bev	CST Member	<a href="mailto:BGatenby@com-trust.org.nz">BGatenby@com-trust.org.nz</a>
Gibson	Paul	CCS	<a href="mailto:pgibson@no.ccs.org.nz">pgibson@no.ccs.org.nz</a>
Gill	Mandy	Age Concern	<a href="mailto:mandy.gill@ageconcern.org.nz">mandy.gill@ageconcern.org.nz</a>
Gleisner	Shenagh	YWCA	
Glenor	Peter	CST Member	<a href="mailto:pglenor@xtra.co.nz">pglenor@xtra.co.nz</a>
Goble	Andrea	Funding Information Service	<a href="mailto:andrea@fis.org.nz">andrea@fis.org.nz</a>
Greer	Gillian	Family Planning	<a href="mailto:gill.greer@fpnz.org.nz">gill.greer@fpnz.org.nz</a>
Gregory	Mandi	Kotare Trust for Social Change in Aotearoa	<a href="mailto:kotare.trust@xtra.co.nz">kotare.trust@xtra.co.nz</a>
Guo	Linhai	Volunteering Waikato	<a href="mailto:linhaiquo@free.net.nz">linhaiquo@free.net.nz</a>
Haimona	Darrin	Te Hauora o Ngati Haua	<a href="mailto:darrin@tehuora.co.nz">darrin@tehuora.co.nz</a>
Hakiwai	Te Aranga	Te Roopu Whakapakari Ora Trust	<a href="mailto:tearanga@trwo.or.gnz">tearanga@trwo.or.gnz</a>
Harper	Pauline	Volunteer Wellington	<a href="mailto:vs@volunteerwellington.org.nz">vs@volunteerwellington.org.nz</a>
Hawea	Leon	CST Member	<a href="mailto:leon@kol.co.nz">leon@kol.co.nz</a>
Henderson	Dave	ANGOA	<a href="mailto:dave.henderson@angoa.org.nz">dave.henderson@angoa.org.nz</a>
Henry	Val	Rata Te Awhina Trust	<a href="mailto:val@rtat.co.nz">val@rtat.co.nz</a>
Hines	Iain	JR McKenzie Trust	<a href="mailto:iain@jmckenzie.org.nz">iain@jmckenzie.org.nz</a>
Hitchings	Liz	Wellington People's Centre	<a href="mailto:wprc@actrix.gen.nz">wprc@actrix.gen.nz</a>
Howard	Tim	NURM	<a href="mailto:the-farm@jhug.co.nz">the-farm@jhug.co.nz</a>
Hughes	Audrey	Merivale Community Centre	<a href="mailto:mercominc@in2net.co.nz">mercominc@in2net.co.nz</a>
Humphries	Maria	Waikato Management School	<a href="mailto:mariah@rmngt.waikato.ac.nz">mariah@rmngt.waikato.ac.nz</a>
Irvine	Jeremy	NZ Council of Christian Social Services	<a href="mailto:jeremy.irvine@nzcss.org.nz">jeremy.irvine@nzcss.org.nz</a>
Isaacs	Peter	Literacy Aotearoa	<a href="mailto:peter@literacy.org.nz">peter@literacy.org.nz</a>
Johnson	Georgina	Tokomaru Bay Community Group Charitable Trust	<a href="mailto:georgina.j@tokomaru.org.nz">georgina.j@tokomaru.org.nz</a>
Kaitoa	Wiremu	Kauhanga Marae & St Barnabas Church Trustees	<a href="mailto:m.oti@xtra.co.nz">m.oti@xtra.co.nz</a>
Kambaran	Andrishia	Age Concern	<a href="mailto:andrishia.kambaran@ageconcern.org.nz">andrishia.kambaran@ageconcern.org.nz</a>
Kershaw	Larinda	Rauwaawa Frankton Dinsdale Rauwaawa Charitable Trust	<a href="mailto:RAUAWATRUST@xtra.co.nz">RAUAWATRUST@xtra.co.nz</a>
Knighton	Geoff	Scout Association of New Zealand	<a href="mailto:Geoff@scoutingnz.org.nz">Geoff@scoutingnz.org.nz</a>
Kominik	Anna	Ideas Shop	<a href="mailto:anna@ideashop.co.nz">anna@ideashop.co.nz</a>
Kopua	Robynn	President NZ Playcentre Federation	<a href="mailto:rkopua@paradise.net.nz">rkopua@paradise.net.nz</a>
Lake	Jo	Presbyterian Support New Zealand	<a href="mailto:pss.natcouncil@xtra.co.nz">pss.natcouncil@xtra.co.nz</a>
Leola	Florence	Alzheimer's NZ	<a href="mailto:Florence@alzheimers.org.nz">Florence@alzheimers.org.nz</a>
Lewis	Colin	NZ Federation of Family Budgeting Service Inc.	<a href="mailto:nzbudget@xtra.co.nz">nzbudget@xtra.co.nz</a>
Low	Christine	National Council of Woman of NZ Inc.	<a href="mailto:nownz@jhug.co.nz">nownz@jhug.co.nz</a>
Lucas	Maria	Ethnic Council	<a href="mailto:maria.lucas@xtra.co.nz">maria.lucas@xtra.co.nz</a>
Mageanu	Cornelia	Ethnic Council	<a href="mailto:mageanu@j4free.co.nz">mageanu@j4free.co.nz</a>
Magill	Pat	Napier Pilot City Trust	<a href="mailto:pat.m@jnhb.co.nz">pat.m@jnhb.co.nz</a>

<b>Surname</b>	<b>Given Names</b>	<b>Organisation</b>	<b>Email</b>
Malcolm	Margy-Jean	Unitec NZ Graduate Diploma in Not for Profit Management	<a href="mailto:mmmalcolm@unitex.ac.nz">mmmalcolm@unitex.ac.nz</a>
Mansell	Anita	Hutt Ethnic Council	<a href="mailto:anita.mansell@xtra.co.nz">anita.mansell@xtra.co.nz</a>
Maraku	Carol	Pou Arahī Te Upoko O Nga Oranga O Te Rae	<a href="mailto:carole.te-upoko@xtra.co.nz">carole.te-upoko@xtra.co.nz</a>
Martin	Bella	CCS, TeKauwhata	<a href="mailto:bmartin@pms.auckland.cs.org.nz">bmartin@pms.auckland.cs.org.nz</a>
Martin	Lonie	Ethnic Council	<a href="mailto:loniemartin@xtra.co.nz">loniemartin@xtra.co.nz</a>
Martin	Ann	Hospice New Zealand	<a href="mailto:ceo@hospice.org.nz">ceo@hospice.org.nz</a>
Masina	Siloma	HVDHB	
Mayow	Tony	WADCOSS	<a href="mailto:mayow@xtra.co.nz">mayow@xtra.co.nz</a>
McCarrison	Chris	Wellington People's Centre	<a href="mailto:wprc@actrix.gen.nz">wprc@actrix.gen.nz</a>
McCluskey	Nani	Te Upoko O Nga Oranga O te Rae	<a href="mailto:Nani.Mccluskey@paradise.net.nz">Nani.Mccluskey@paradise.net.nz</a>
McCurdy	Claire-Louise	Voluntary Agencies Support Scheme	<a href="mailto:claire-louise@vass.org.nz">claire-louise@vass.org.nz</a>
McDonald	Glen	Vincent's Art Workshop	<a href="mailto:vincentartworkshop@xtra.co.nz">vincentartworkshop@xtra.co.nz</a>
McLennan	Barbara	Department of Internal Affairs	<a href="mailto:barbara.maclennan@xtra.co.nz">barbara.maclennan@xtra.co.nz</a>
McQueen	Paora	Arai Te Uru Whare Hauora	<a href="mailto:paora@araituru.co.nz">paora@araituru.co.nz</a>
Menzies-Culling	Suzanne	YWCA Dunedin/Angel Fund	<a href="mailto:angelfund@imail.net.nz">angelfund@imail.net.nz</a>
Middlemiss	Wendy	Literacy Aotearoa	<a href="mailto:lit.dunedin@xtra.co.nz">lit.dunedin@xtra.co.nz</a>
Morris	Ewan	Council for International Development	<a href="mailto:ewan.morris@cid.org.nz">ewan.morris@cid.org.nz</a>
Morrison	Maitre	Raukura Manaaki Trust	<a href="mailto:Johnnie.Davis@waic.govt.nz">Johnnie.Davis@waic.govt.nz</a>
Mua'au	Nanai	Pacific Health Services, Hutt Valley	<a href="mailto:Nanai.Muaau@pchs.co.nz">Nanai.Muaau@pchs.co.nz</a>
Mudalair	Samresan	Ethnic Council	<a href="mailto:srmr@ihug.co.nz">srmr@ihug.co.nz</a>
Murray	Lorna	AMHS	<a href="mailto:lorna@amhs.org.nz">lorna@amhs.org.nz</a>
Napper	Mary	Invercargill Community	<a href="mailto:mary.napper@icc.govt.nz">mary.napper@icc.govt.nz</a>
O'Brien	Inga	Cancer Society of NZ	<a href="mailto:inga.obrien@cancer.org.nz">inga.obrien@cancer.org.nz</a>
Offord	Lorraine	ALPHA	<a href="mailto:lorraine.offord@paradise.net.nz">lorraine.offord@paradise.net.nz</a>
O'Kane	Jocelyn	Wellington People's Centre	<a href="mailto:wprc@actrix.gen.nz">wprc@actrix.gen.nz</a>
Oti	Marama	HNZ	<a href="mailto:m.oti@xtra.co.nz">m.oti@xtra.co.nz</a>
Pahau	Iris	CST Member	<a href="mailto:ipahau@paradise.net.nz">ipahau@paradise.net.nz</a>
Paton	Julian	Hutt COSS	<a href="mailto:p.a.s.s.@anet.co.nz">p.a.s.s.@anet.co.nz</a>
Paxie	Jim	Taranaki Multi-Ethnic Council	<a href="mailto:jan.jim.paxie@xnet.co.nz">jan.jim.paxie@xnet.co.nz</a>
Peel	Robyn	Alzheimer's NZ	<a href="mailto:robyn@aizheimers.org.nz">robyn@aizheimers.org.nz</a>
Peet	John	Engineers for Social Responsibility	<a href="mailto:john.peet@canterbury.ac.nz">john.peet@canterbury.ac.nz</a>
Peet	Katherine	Network Waitangi Olautahi	<a href="mailto:john.peet@canterbury.ac.nz">john.peet@canterbury.ac.nz</a>
Peters	Carol	One Double Five Community Centre	<a href="mailto:carolp@ihug.co.nz">carolp@ihug.co.nz</a>
Poananga	Atareta	CST Member	<a href="mailto:muriwaigirl@gmail.com">muriwaigirl@gmail.com</a>
Poipoi	Philomena	Southland	<a href="mailto:philomena@waihopa.org.nz">philomena@waihopa.org.nz</a>
Pokaia	Sandy	Waikato Social Services	<a href="mailto:spokaia@com-trust.org.nz">spokaia@com-trust.org.nz</a>

<b>Surname</b>	<b>Given Names</b>	<b>Organisation</b>	<b>Email</b>
Pokaia	Tame	Waikato Social Services	<a href="mailto:spokaia@com-trust.org.nz">spokaia@com-trust.org.nz</a>
Ratcliffe	Brenda	OCVS	
Reid	Tina	NZ Federation of Voluntary Welfare Organisations	<a href="mailto:ed@nzfvwo.org.nz">ed@nzfvwo.org.nz</a>
Reihana-Ruka	Debra	Hauraki Maori Trust Board Matauranga Kohunghunga Roopu	<a href="mailto:debra@haurakimaori.co.nz">debra@haurakimaori.co.nz</a>
Robinson	Jo-Ani	He Kainga Oranga	<a href="mailto:jo-ani@wnmeds.ac.nz">jo-ani@wnmeds.ac.nz</a>
Robinson	Helen	Challenge 2000	<a href="mailto:challenge2000@wnc.quik.co.nz">challenge2000@wnc.quik.co.nz</a>
Russell	Sue	Dunedin Council of Social Services	<a href="mailto:sue.dcross@paradise.net.nz">sue.dcross@paradise.net.nz</a>
Schultemaker	Saskia	Arts Waikato	<a href="mailto:hilary@com-trust.org.nz">hilary@com-trust.org.nz</a>
Scott	Robyn	Philanthropy NZ	<a href="mailto:robyn@philanthropy.org.nz">robyn@philanthropy.org.nz</a>
Scotts	Margie	Community Housing Aotearoa Inc	<a href="mailto:margie@communityhousing.org.nz">margie@communityhousing.org.nz</a>
Sefuiva	Sam	CST Member	<a href="mailto:sefuiva1@jhug.co.nz">sefuiva1@jhug.co.nz</a>
Seymour	Pat	Tokoroa Council of Social Services	<a href="mailto:tcoss@xtra.co.nz">tcoss@xtra.co.nz</a>
Smith	Jill		<a href="mailto:jills@psotago.org.nz">jills@psotago.org.nz</a>
Smith	Donna	Rauwaawa Frankton Dinsdale Rauwaawa Charitable Trust	<a href="mailto:RAUAWATRUST@xtra.co.nz">RAUAWATRUST@xtra.co.nz</a>
Smith	Beverley	New Zealand Playcentre Federation	<a href="mailto:bev.max.smith@xtra.co.nz">bev.max.smith@xtra.co.nz</a>
Smith	Sarah		<a href="mailto:glenleith-farm@xtra.co.nz">glenleith-farm@xtra.co.nz</a>
Spelman	Tony	CST Member	<a href="mailto:tonys@pl.net">tonys@pl.net</a>
Stehlin	Odele	Waihopai Runaka	<a href="mailto:odele.stehlin@waihopai.org.nz">odele.stehlin@waihopai.org.nz</a>
Stevens	Jane	Waikato Social Services	<a href="mailto:j.stevens@com-trust.org.nz">j.stevens@com-trust.org.nz</a>
Stoneman	Rata	Awarua Social & Health Services	<a href="mailto:awaruashs@xtra.co.nz">awaruashs@xtra.co.nz</a>
Summerhays	Karen	Tauranga Environment Centre	<a href="mailto:ksummerhays@xtra.co.nz">ksummerhays@xtra.co.nz</a>
Te Moananui	Justine	Te Kāiāwhina Ahumahi	<a href="mailto:titiag@tkaito.co.nz">titiag@tkaito.co.nz</a>
Tekiki	Terongo	NZCOSS	<a href="mailto:nzccoss@nzccoss.org.nz">nzccoss@nzccoss.org.nz</a>
Terrell	Vicki	NZCCS National Office	<a href="mailto:vterrell@no.ccs.org.nz">vterrell@no.ccs.org.nz</a>
Thomson	Julie	Volunteer Wellington	<a href="mailto:julie@volunteerwellington.org.nz">julie@volunteerwellington.org.nz</a>
Tira	Josephine		<a href="mailto:tira@mwa.govt.nz">tira@mwa.govt.nz</a>
Toroa	Jody	Tairāwhiti Beneficiary Advocacy Trust	<a href="mailto:munwaigirl@gmail.com">munwaigirl@gmail.com</a>
Torstonson	Sharon	CST Member	<a href="mailto:ccoss@jhug.co.nz">ccoss@jhug.co.nz</a>
Toso	Tanu	Pacific Group	<a href="mailto:tanu_blackpearl@xtra.co.nz">tanu_blackpearl@xtra.co.nz</a>
Toso	Jenny Casey	Pacific Group	<a href="mailto:tanu_blackpearl@xtra.co.nz">tanu_blackpearl@xtra.co.nz</a>
Tupou	Temaleiti	Pacific Mental Health (Vakaola)	<a href="mailto:hfrfeki@clear.net.nz">hfrfeki@clear.net.nz</a>
Tweedy	Roger	Work & Age Trust NZ	<a href="mailto:rogertweedy@xtra.co.nz">rogertweedy@xtra.co.nz</a>
Twyford	Conor	NZCOSS	<a href="mailto:conortwyford@in2net.co.nz">conortwyford@in2net.co.nz</a>
van den Munckhof	Petra	Health Care Aotearoa	<a href="mailto:Petra@hca.org.nz">Petra@hca.org.nz</a>
Vao	Tanielo	Pacific Health Services, Hutt Valley	
Williams	Tuwākairiora	Funding Information Services	<a href="mailto:tuwill@xtra.co.nz">tuwill@xtra.co.nz</a>

<b>Surname</b>	<b>Given Names</b>	<b>Organisation</b>	<b>Email</b>
Williams	Catherine	Mental Health Foundation	<a href="mailto:catherine@mentalhealth.org.nz">catherine@mentalhealth.org.nz</a>
Wilson	Maree	Ideas Shop	<a href="mailto:Maree@ideashop.co.nz">Maree@ideashop.co.nz</a>
Wineera	Tengaruru	Western Institute of Technology at Taranaki	<a href="mailto:t.wineera@witt.ac.nz">t.wineera@witt.ac.nz</a>
Woods	Waitangi	Te Kaiwhina Ahumahi	<a href="mailto:titiag@kikaito.co.nz">titiag@kikaito.co.nz</a>
Woolhouse	Anne	Family Planning	<a href="mailto:anna.woolhouse@fpanz.org.nz">anna.woolhouse@fpanz.org.nz</a>
Workman	Kim	Prison Fellowship of New Zealand	<a href="mailto:kimworkman@xtra.co.nz">kimworkman@xtra.co.nz</a>

# Appendix II

## Formal Apologies

Surname	Given Names	Organisation	Email
Andrews	Alma	Wellington Maori Rugby	<a href="mailto:alma.andrews@huttcity.govt.nz">alma.andrews@huttcity.govt.nz</a>
Apatu	Marei	Te Taiwhenua o Heretaunga	<a href="mailto:GM.PA@toth.iwi.nz">GM.PA@toth.iwi.nz</a>
Archer	Nick	Upper Hutt Educational And Workskills Training Charitable Trust	<a href="mailto:noch371@hotmail.com">noch371@hotmail.com</a>
Askeur	Steph	Arahura Trust	<a href="mailto:admin@arahura.org.nz">admin@arahura.org.nz</a>
Aspinall	Mema	Tuaasinasina (National Samoan Elderly People's Council)	<a href="mailto:eveise@xtra.co.nz">eveise@xtra.co.nz</a>
Atkin	Carol	Literacy Aotearoa	<a href="mailto:carol@literacy.org.nz">carol@literacy.org.nz</a>
Austin	Mere	Kohanga Reo	<a href="mailto:whanau@x02e008kohange.ac.nz">whanau@x02e008kohange.ac.nz</a>
Belworthy	Brian	Research Student?	<a href="mailto:bbelworthy@paradise.net.nz">bbelworthy@paradise.net.nz</a>
Bishop	Darryl	Youth Horizons	<a href="mailto:darrylb@horizons.org.nz">darrylb@horizons.org.nz</a>
Bradford	Sue	Green Party	<a href="mailto:sue.bradford@parliament.govt.nz">sue.bradford@parliament.govt.nz</a>
Bray	Stephen	Te Runanganui O Waitaha me Maata Waka Inc. 1991	<a href="mailto:waitaha_iwi@xtra.co.nz">waitaha_iwi@xtra.co.nz</a>
Brooks	Roger	Refugee Council of New Zealand Inc	<a href="mailto:rcnz@pl.net">rcnz@pl.net</a>
Cook	Neti	Pacific Peoples' Addiction Services Inc.	<a href="mailto:ned.ppassi@xtra.co.nz">ned.ppassi@xtra.co.nz</a>
Copeland	Gordon	United Future	
Curtis	Teresa	Te Kahui Atawhai O Te Motu Inc	<a href="mailto:teresa.curtis@tekahuiatawhai.com">teresa.curtis@tekahuiatawhai.com</a>
Dewes	Hiria	Kahungungu	<a href="mailto:Hiria.Dewes@hawkesbaydhb.govt.nz">Hiria.Dewes@hawkesbaydhb.govt.nz</a>
Doyle	Mary	WellLink	<a href="mailto:mary@wellink.org.nz">mary@wellink.org.nz</a>
Drysdale	Lima	Social Services	<a href="mailto:blackdougias@xtra.co.nz">blackdougias@xtra.co.nz</a>
Faiumu-Isa'ako	Ida	Cannons Creed Fanau Centre	<a href="mailto:ida@phsporua.co.nz">ida@phsporua.co.nz</a>
Georgieff	Nigel	Sports Canterbury	<a href="mailto:nigel@sportcan.org.nz">nigel@sportcan.org.nz</a>
Hiriona-Bray	Ani	Te Marae Komiti O Kauwhata Trust	<a href="mailto:bray.waitaha@xtra.co.nz">bray.waitaha@xtra.co.nz</a>
Kahu	Lisa	Kaikoura	<a href="mailto:tetai@ihug.co.nz">tetai@ihug.co.nz</a>
Kaitara	Tami	Wellington Kiribati Community	
Kereama	Wayne	Te Marae Komiti O Kauwhata Trust	<a href="mailto:eru@infogen.net.nz">eru@infogen.net.nz</a>
Lawley	Jude	ICONZ	<a href="mailto:jlawley@iconz.co.nz">jlawley@iconz.co.nz</a>
Mariu	Geoff	AWA FM Wanganui	<a href="mailto:geoff@awafm.co.nz">geoff@awafm.co.nz</a>
Marshall	Alison	Royal New Zealand Foundation of the Blind	<a href="mailto:amarshall@rmzfb.org.nz">amarshall@rmzfb.org.nz</a>
Martin	Ann	Hospice New Zealand	<a href="mailto:ceo@hospice.org.nz">ceo@hospice.org.nz</a>
Martin	Lonie	Ethnic Council	<a href="mailto:loniemartin@xtra.co.nz">loniemartin@xtra.co.nz</a>
Murray	Naomi	Sport Gisborne	<a href="mailto:naomim@sportgisborne.org.nz">naomim@sportgisborne.org.nz</a>
Narayanan	Pancha	Ethnic Council	<a href="mailto:executive@nzfec.org.nz">executive@nzfec.org.nz</a>

Surname	Given Names	Organisation	Email
Nepe	Erena	Rongowhakaata Iwi Trust	<a href="mailto:Trust@rongowhakaata.iwi.nz">Trust@rongowhakaata.iwi.nz</a>
Nicholson	Rosanna	Te Kahui Atawhai O Te Motu Inc	<a href="mailto:rnichols@ihug.co.nz">rnichols@ihug.co.nz</a>
Noonan	Michael	Coromandel Independent Living Trust	<a href="mailto:cilt@cilt.org.nz">cilt@cilt.org.nz</a>
Pahuru-Huriwai	Ani	Te Aroha Kanarahi Trust	<a href="mailto:hinerupe.marae@twor.ac.nz">hinerupe.marae@twor.ac.nz</a>
Paneitio	Edward	Te Marae Komiti O Kauwhata Trust	<a href="mailto:grenadavegas@hotmail.com">grenadavegas@hotmail.com</a>
Ropha	Reweti	Turanga Health	<a href="mailto:reweti@turangahealth.co.nz">reweti@turangahealth.co.nz</a>
Stirling	Maruhaeremuri	OSS	<a href="mailto:oss@xtra.co.nz">oss@xtra.co.nz</a>
Sykes	Peter	Mangere East Family Service Centre Inc	<a href="mailto:director@mangereeastfsc.org.nz">director@mangereeastfsc.org.nz</a>
Taiapa	Wairahi	Community Living & Lifestyle Trust	<a href="mailto:Wairahi.Taiapa@clt.org.nz">Wairahi.Taiapa@clt.org.nz</a>
Tait-Jones	Billie	Maori Women's Welfare League, Wellington	<a href="mailto:billie.tait-jones@wcc.govt.nz">billie.tait-jones@wcc.govt.nz</a>
Timu	Wendell	Tuwharetoa Health Services	<a href="mailto:wendell@npe.com.nz">wendell@npe.com.nz</a>
Tipene	Billy	Maori Sports, Taranaki	<a href="mailto:Billy.Tipene@dia.govt.nz">Billy.Tipene@dia.govt.nz</a>
Tufail	John		<a href="mailto:lyon@paradise.net.nz">lyon@paradise.net.nz</a>
Waaka	Gary	Temuka	<a href="mailto:arowhenua@xtra.co.nz">arowhenua@xtra.co.nz</a>
Wallace	Cath	Environment & Conservation Organisations of NZ	<a href="mailto:Cath.Wallace@yuvw.ac.nz">Cath.Wallace@yuvw.ac.nz</a>
Watene	Alayna	Te Taiwhenua o Heretaunga	<a href="mailto:alaynawatene@ttoh.iwi.nz">alaynawatene@ttoh.iwi.nz</a>
Watson	Jude	Ministry of Women's Affairs	<a href="mailto:Watson@mwa.govt.nz">Watson@mwa.govt.nz</a>
Webster	Pat	CWTAS/SCPI	<a href="mailto:pat.webster@clear.net.nz">pat.webster@clear.net.nz</a>
Whitty	John	The Federation of New Zealand Prisoners' Aid & Rehabilitation Societies Incorporated	<a href="mailto:nzprats@xtra.co.nz">nzprats@xtra.co.nz</a>
Wilson	Neville	Habitat for Humanity NZ	<a href="mailto:neville@habitatnz.co.nz">neville@habitatnz.co.nz</a>